

DAPCO®

Ultra Force Extended® Nitrogen Gas Springs

UX Series

New Models!
UX.1600
UX.20000



- Reduce die construction costs
- Long stroke lengths
- Directly upgrade ISO 750-10000 models
- Variety of attachable and welded mounts

Patent pending



The global leader in nitrogen gas spring technology

Introduction

DADCO produces top quality products at competitive prices and provides a superior level of customer service. Founded in 1958, DADCO is the highest volume producer of gas springs for press tools. DADCO's products are widely approved and used in global operations for many industries including metal stamping, automotive, and plastic injection molding.



High Force + ISO Envelope = UX Series

DADCO's **Ultra Force Extended®** Series fits the standard full height gas spring envelope with more force on contact, making it ideal for use with high strength steel. It also means cost savings in die construction and maintenance. The UX Series is available in extended stroke lengths with a variety of welded and attachable mounts.

Model	Diameter	Maximum Force on Contact
UX.1000	50 mm (1.968")	9.2 kN (2076 lb.)
UX.1600	63 mm (2.480")	15 kN (3432 lb.)
UX.2600	75 mm (2.953")	24 kN (5362 lb.)
UX.4600	95 mm (3.740")	42 kN (9532 lb.)
UX.6600	120 mm (4.724")	66 kN (14894 lb.)
UX.9600	150 mm (5.906")	95 kN (21447 lb.)
UX.20000	195 mm (7.677")	199 kN (44747 lb.)

Rapid Delivery

DADCO's modern 11,600 m² main production facility as well as satellite facilities permit the fastest deliveries in the industry. Products are available both directly and through a network of stocking distributors, providing worldwide support.

UltraPak® Technology

The UX Series uses the same superior **UltraPak®** cartridge as the popular **Ultra Force®** Series. The **UltraPak®** employs advanced materials to reduce the rod cartridge profile while increasing performance. The **UltraPak®** is comprised of a rod wiper, rod seal and guide arranged to extend life, retain lubrication, exclude contaminants, and provide excellent wear characteristics. When coupled with DADCO's superior finished piston rod, the **UltraPak®** is the ultimate sealing system.

Numerous Piping Options

With DADCO's **Ultra Force Extended®** Series, piping gas springs is easy because every necessary tool or component is readily available (e.g. reliable and cost-effective fittings, various hoses and couplings, control panels, solid fittings, crimping equipment). For additional information, refer to DADCO's Nitrogen Gas Spring Linked System Components Catalog.

SMS®

For those instances when a customer prefers to have DADCO provide a finished system, several options are available. A popular option, DADCO's Sectional Mounting System (SMS®) includes cylinders mounted to a SMS® plate and linked using hose, fittings and a control panel. Shipped ready to install, customers find the SMS® to be a trouble free, cost-effective option. For additional information, refer to bulletin B09114.

SMS-i®

Another option is the Sectional Mounting System - Internal (SMS-i®). The SMS-i® consists of an internally piped plate with mounted cylinders. DADCO recommends using the SMS-i® as a cost effective alternative to traditional manifold systems. For more information, request bulletin B07104A.

Customer Satisfaction

DADCO's motto is "Whatever It Takes To Satisfy Our Customers." DADCO will assist in any way possible to ensure that customers are completely satisfied. DADCO's salespeople and distributors are solution-oriented, product-knowledgeable and eager to assist customers. DADCO's engineers are available to help customers with specific applications.

Warranty

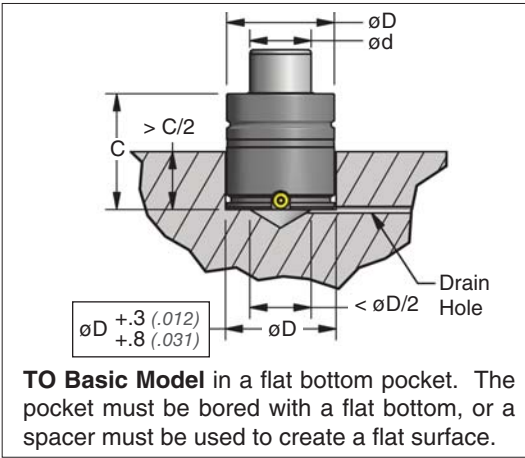
DADCO warrants its UX Series Nitrogen Gas Springs to be free from defects in workmanship or materials for a period of one year from date of manufacture.

CAD Templates On-line 

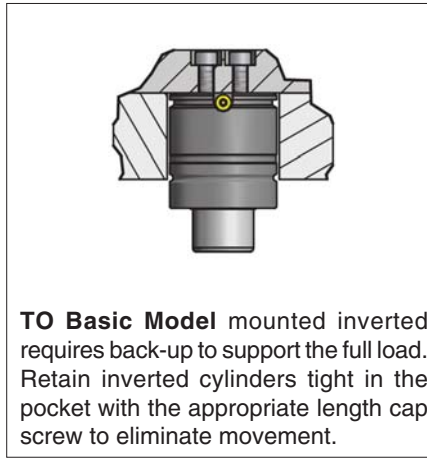
DADCO's entire product line is available on-line in solid models and 2D CAD formats. For more information, visit our website, www.dadco.net, or contact DADCO.

Application Examples

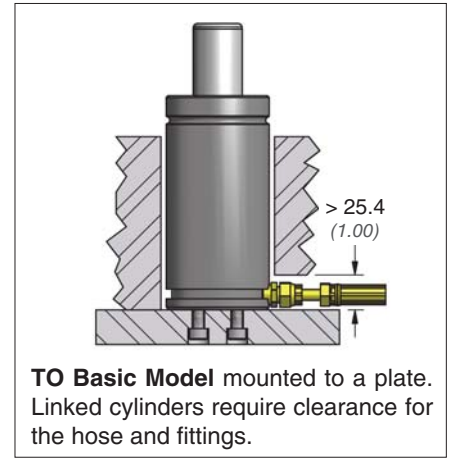
DADCO offers a variety of mount options to meet specific customer applications. Installation and fastening of the gas springs should take into consideration load support, fastener selection and torque values. For additional information on installation requirements see page 19. Cylinder and mount dimensions are shown on pages 4-17.



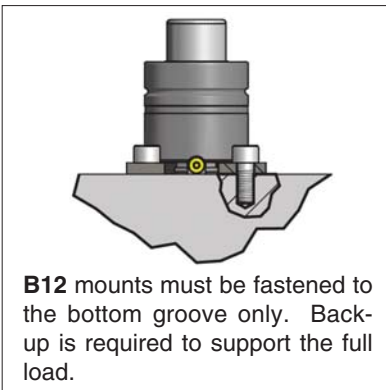
TO Basic Model in a flat bottom pocket. The pocket must be bored with a flat bottom, or a spacer must be used to create a flat surface.



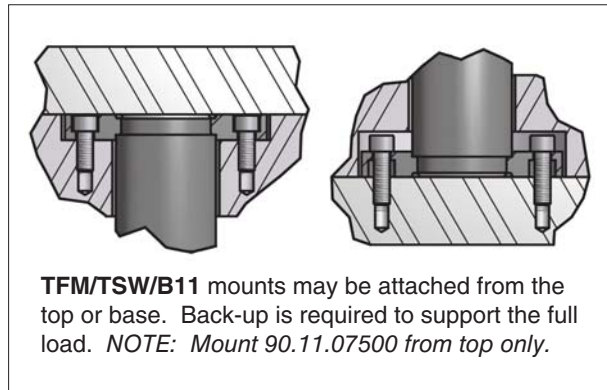
TO Basic Model mounted inverted requires back-up to support the full load. Retain inverted cylinders tight in the pocket with the appropriate length cap screw to eliminate movement.



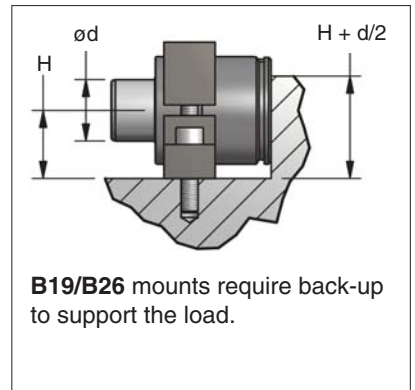
TO Basic Model mounted to a plate. Linked cylinders require clearance for the hose and fittings.



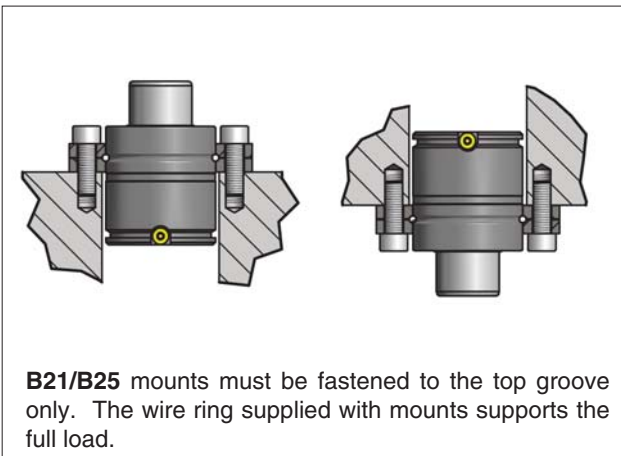
B12 mounts must be fastened to the bottom groove only. Back-up is required to support the full load.



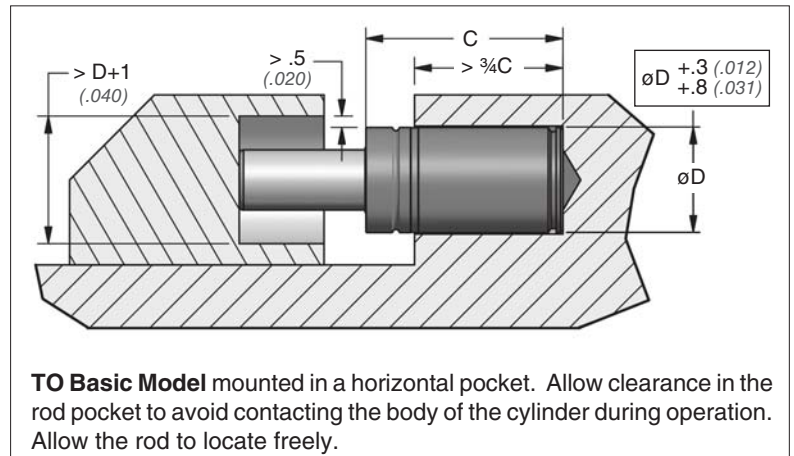
TFM/TSW/B11 mounts may be attached from the top or base. Back-up is required to support the full load. *NOTE: Mount 90.11.07500 from top only.*



B19/B26 mounts require back-up to support the load.

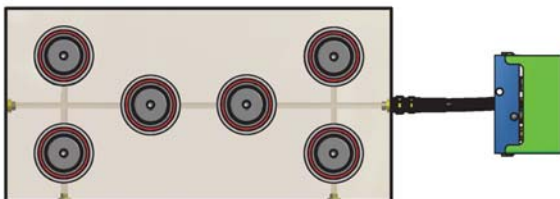


B21/B25 mounts must be fastened to the top groove only. The wire ring supplied with mounts supports the full load.

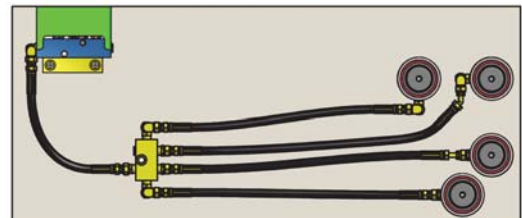


TO Basic Model mounted in a horizontal pocket. Allow clearance in the rod pocket to avoid contacting the body of the cylinder during operation. Allow the rod to locate freely.

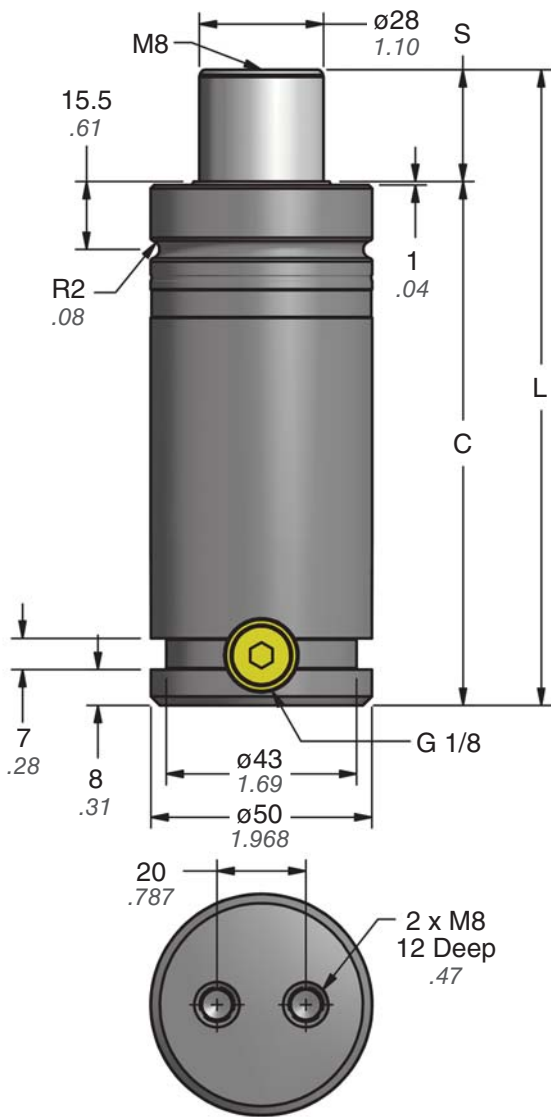
SMS® / SMS-i® DADCO offers customized Sectional Mounting Systems (SMS® and SMS-i®) which are fabricated to customer specifications, pressure tested and shipped ready to install.



DADCO SMS-i® with (6) UX.6600 gas springs plumbed internally and connected to a control panel.



DADCO SMS® with (4) UX.4600 gas springs linked using 90.400 (Y-400) hose, fittings and a control panel.



TO – Basic Model

Part No.	S mm inch	C	L ±0.25 ±.010
• UX.1000.025	25 0.98	118 4.65	143 5.630
• UX.1000.038	37.5 1.48	130.5 5.14	168 6.614
• UX.1000.050	50 1.97	143 5.63	193 7.598
UX.1000.063	62.5 2.46	155.5 6.12	218 8.583
UX.1000.075	75 2.95	168 6.61	243 9.567
• UX.1000.080	80 3.15	173 6.81	253 9.961
• UX.1000.100	100 3.94	193 7.60	293 11.535
• UX.1000.125	125 4.92	218 8.58	343 13.504
UX.1000.150	150 5.91	243 9.57	393 15.472
• UX.1000.160	160 6.30	253 9.96	413 16.260
UX.1000.175	175 6.89	268 10.55	443 17.441
UX.1000.200	200 7.87	293 11.54	493 19.409

• Preferred Sizes

Ordering Example:

UX.1000.025. TO. C. 150

Part Number: _____
 Includes Series, Model and Stroke Length.

Mount Option: _____
 TO = Basic Model. *When not specified, default is TO.* Mounts ordered with cylinder will be attached at the factory.

Mount Only Ordering Example: 90.21.00750

Charging Pressure: _____
 15–150 bar (220–2175 psi). *When not specified, default is 150 bar.*

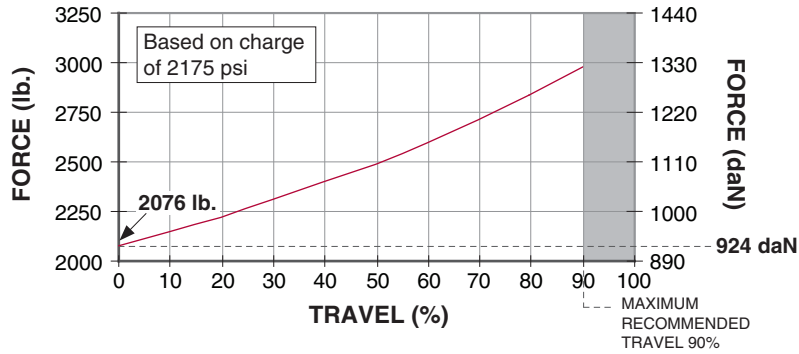
Operating System: _____
 C = Self-contained, F = Open Flow Fitting. *When not specified, default is C, self-contained.*

UX.1000 – 9.2 kN / 1.0 ton

Force Charts

On-Contact Force

psi	lb.
2175	2076
2000	1909
1750	1670
1500	1432
1000	954
500	477
250	239



On-Contact Force

bar	daN
150	924
125	770
100	616
75	462
50	308
25	154
20	123

Mount Options

TFM Welded

TSW Welded

B11 90.11.00750

B12 90.12.00750

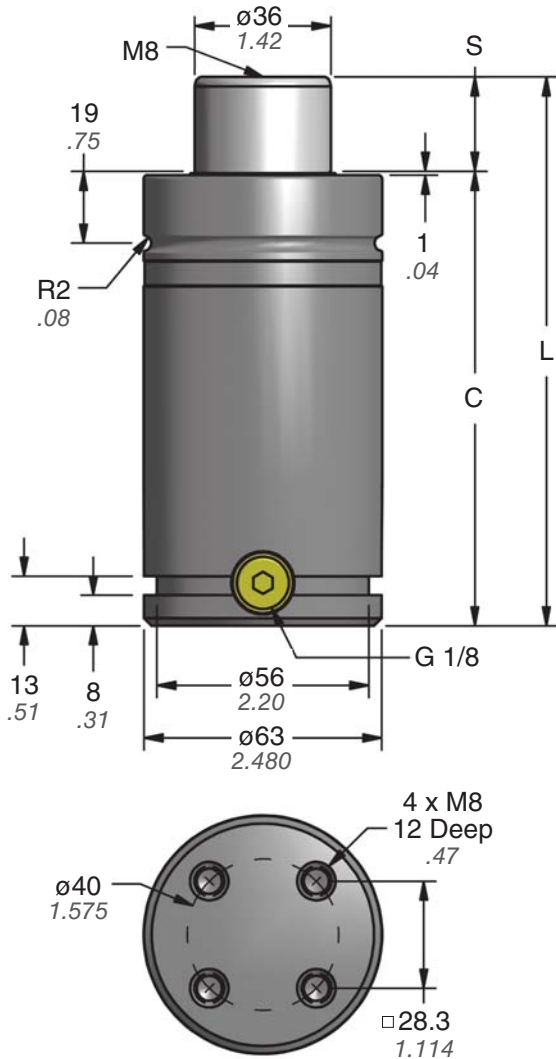
B21 90.21.00750

B25 90.25.00750

B26 90.26.00750

DADCO offers a wide variety of mounts. If the mounts above are not suitable for the application, contact DADCO.

NEW!



TO – Basic Model

Part No.	S mm inch	C	L ±0.25 ±.010
• UX.1600.025	25 0.98	120 4.72	145 5.709
• UX.1600.038	37.5 1.48	132.5 5.22	170 6.693
• UX.1600.050	50 1.97	145 5.71	195 7.677
UX.1600.063	62.5 2.46	157.5 6.20	220 8.661
UX.1600.075	75 2.95	170 6.69	245 9.646
• UX.1600.080	80 3.15	175 6.89	255 10.039
• UX.1600.100	100 3.94	195 7.68	295 11.614
• UX.1600.125	125 4.92	220 8.66	345 13.583
UX.1600.150	150 5.91	245 9.65	395 15.551
• UX.1600.160	160 6.30	255 10.04	415 16.339
UX.1600.175	175 6.89	270 10.63	445 17.520
UX.1600.200	200 7.87	295 11.61	495 19.488

• Preferred Sizes

Ordering Example:

UX.1600.025. TO. C. 150

Part Number:

Includes Series, Model and Stroke Length.

Mount Option:

TO = Basic Model. *When not specified, default is TO.* Mounts ordered with cylinder will be attached at the factory.

Mount Only Ordering Example: 90.21.1600

Charging Pressure:

15–150 bar (220–2175 psi). *When not specified, default is 150 bar.*

Operating System:

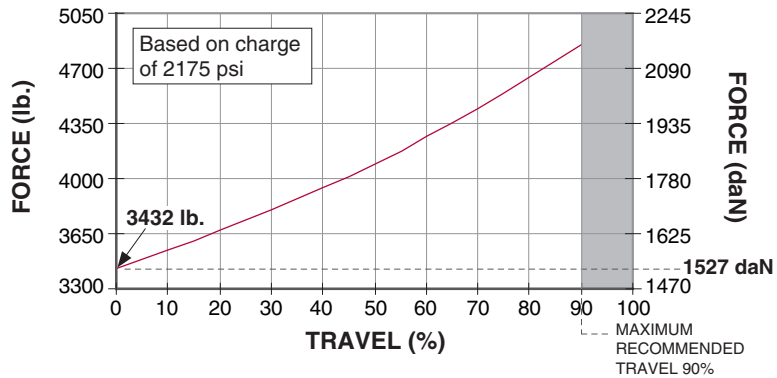
C = Self-contained, F = Open Flow Fitting. *When not specified, default is C, self-contained.*

UX.1600 – 15 kN / 1.7 ton

Force Charts

On-Contact Force

psi	lb.
2175	3432
2000	3155
1750	2761
1500	2367
1000	1578
500	789
250	394



On-Contact Force

bar	daN
150	1527
125	1272
100	1018
75	763
50	509
25	254
20	204

Mount Options

B212 / 90.212.1600

B112 / 90.112.1600

Part No.	A	B
90.212.1600	100 3.94	73.5 2.894
90.112.1600	85 3.35	60 2.362

B319

90.319.1600

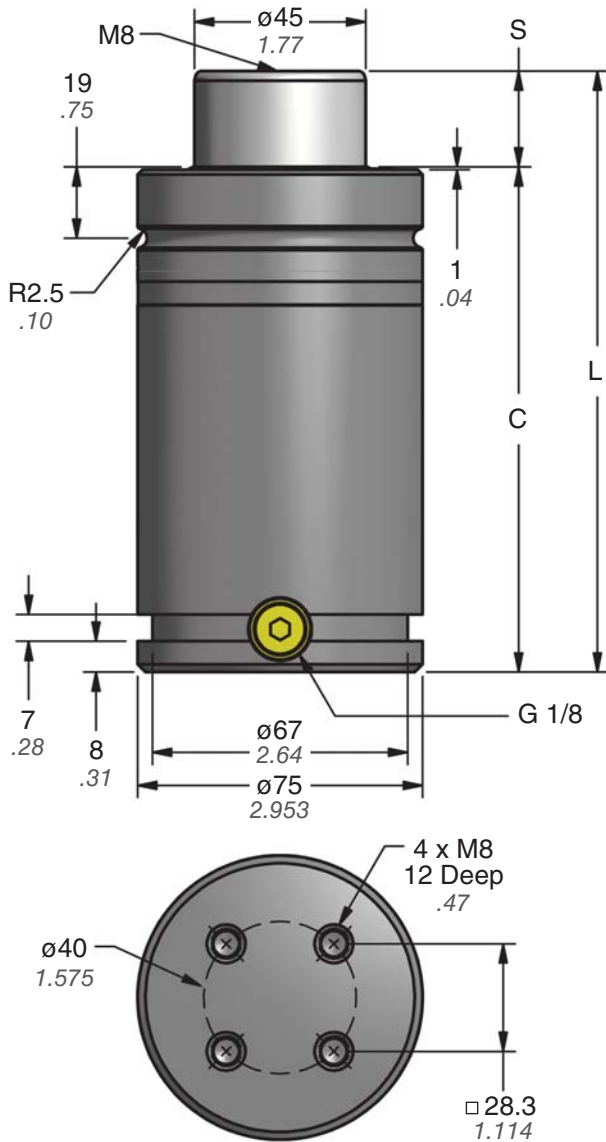
B21

90.21.1600

B25

90.25.1600

DADCO offers a wide variety of mounts. If the mounts above are not suitable for the application, contact DADCO.



TO – Basic Model

Part No.	S mm inch	C	L ±0.25 ±.010
• UX.2600.025	25 0.98	133 5.24	158 6.220
• UX.2600.038	37.5 1.48	145.5 5.73	183 7.205
• UX.2600.050	50 1.97	158 6.22	208 8.189
UX.2600.063	62.5 2.46	170.5 6.71	233 9.173
UX.2600.075	75 2.95	183 7.20	258 10.157
• UX.2600.080	80 3.15	188 7.40	268 10.551
• UX.2600.100	100 3.94	208 8.19	308 12.126
• UX.2600.125	125 4.92	233 9.17	358 14.094
UX.2600.150	150 5.91	258 10.16	408 16.063
• UX.2600.160	160 6.30	268 10.55	428 16.850
UX.2600.175	175 6.89	283 11.14	458 18.031
UX.2600.200	200 7.87	308 12.13	508 20.000

• Preferred Sizes

Ordering Example:

UX.2600.025. TO. C. 150

Part Number:

Includes Series, Model and Stroke Length.

Mount Option:

TO = Basic Model. *When not specified, default is TO.* Mounts ordered with cylinder will be attached at the factory.

Mount Only Ordering Example: 90.21.01500

Charging Pressure:

15–150 bar (220–2175 psi). *When not specified, default is 150 bar.*

Operating System:

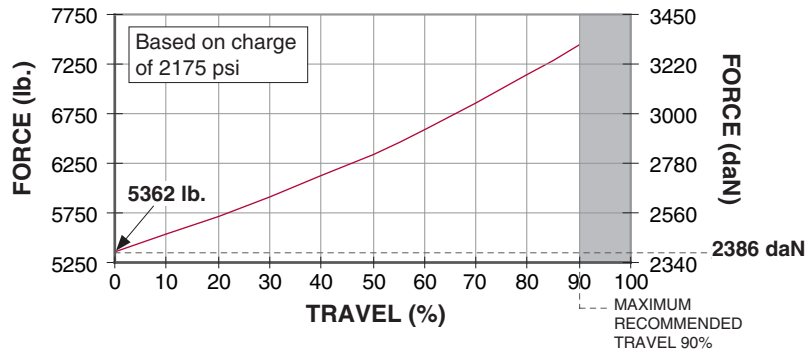
C = Self-contained, F = Open Flow Fitting. *When not specified, default is C, self-contained.*

UX.2600 – 24 kN / 2.6 ton

Force Charts

On-Contact Force

psi	lb.
2175	5362
2000	4930
1750	4314
1500	3698
1000	2465
500	1233
250	616



On-Contact Force

bar	daN
150	2386
125	1988
100	1590
75	1193
50	795
25	398
20	318

Mount Options

TFM Welded

TSW Welded

B11 90.11.01500

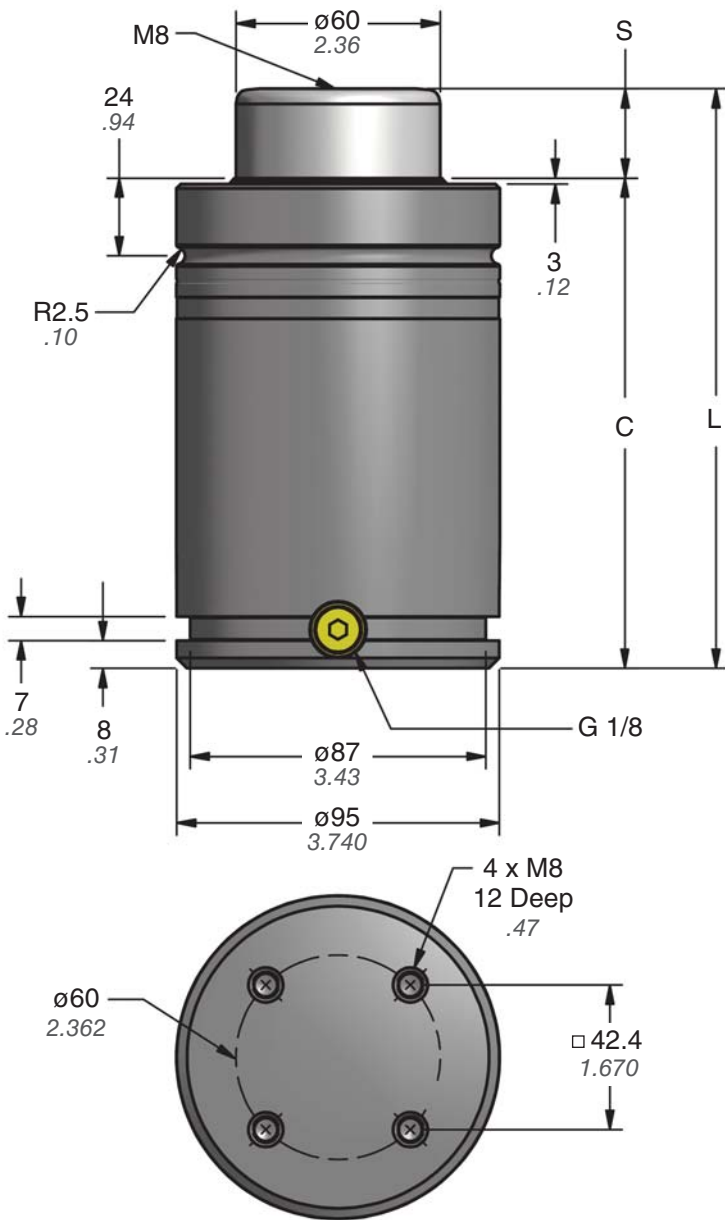
B12 90.12.01500

B21 90.21.01500

B25 90.25.01500

B26 90.26.01500

DADCO offers a wide variety of mounts. If the mounts above are not suitable for the application, contact DADCO.



TO – Basic Model

Part No.	S mm inch	C	L ±0.25 ±.010
• UX.4600.025	25 0.98	145 5.71	170 6.693
• UX.4600.038	37.5 1.48	157.5 6.20	195 7.677
• UX.4600.050	50 1.97	170 6.69	220 8.661
UX.4600.063	62.5 2.46	182.5 7.19	245 9.646
UX.4600.075	75 2.95	195 7.68	270 10.630
• UX.4600.080	80 3.15	200 7.87	280 11.024
• UX.4600.100	100 3.94	220 8.66	320 12.598
• UX.4600.125	125 4.92	245 9.65	370 14.567
UX.4600.150	150 5.91	270 10.63	420 16.535
• UX.4600.160	160 6.30	280 11.02	440 17.323
UX.4600.175	175 6.89	295 11.61	470 18.504
UX.4600.200	200 7.87	320 12.60	520 20.472

• Preferred Sizes

Ordering Example:

UX.4600.025. TO. C. 150

Part Number: _____
 Includes Series, Model and Stroke Length.

Mount Option: _____
 TO = Basic Model. *When not specified, default is TO.* Mounts ordered with cylinder will be attached at the factory.

Mount Only Ordering Example: 90.21.03000

Charging Pressure: _____
 15–150 bar (220–2175 psi). *When not specified, default is 150 bar.*

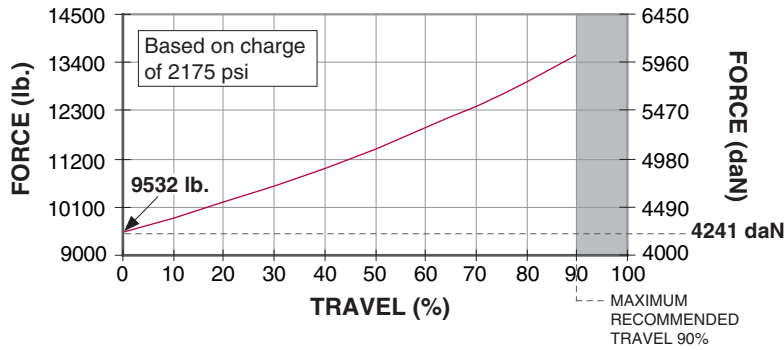
Operating System: _____
 C = Self-contained, F = Open Flow Fitting. *When not specified, default is C, self-contained.*

UX.4600 – 42 kN / 4.7 ton

Force Charts

On-Contact Force

psi	lb.
2175	9532
2000	8765
1750	7669
1500	6574
1000	4383
500	2191
250	1096



On-Contact Force

bar	daN
150	4241
125	3534
100	2827
75	2121
50	1414
25	707
20	565

Mount Options

TFM **Welded**

TSW **Welded**

B11 **90.11.03000**

B12 **90.12.03000**

B21 **90.21.03000**

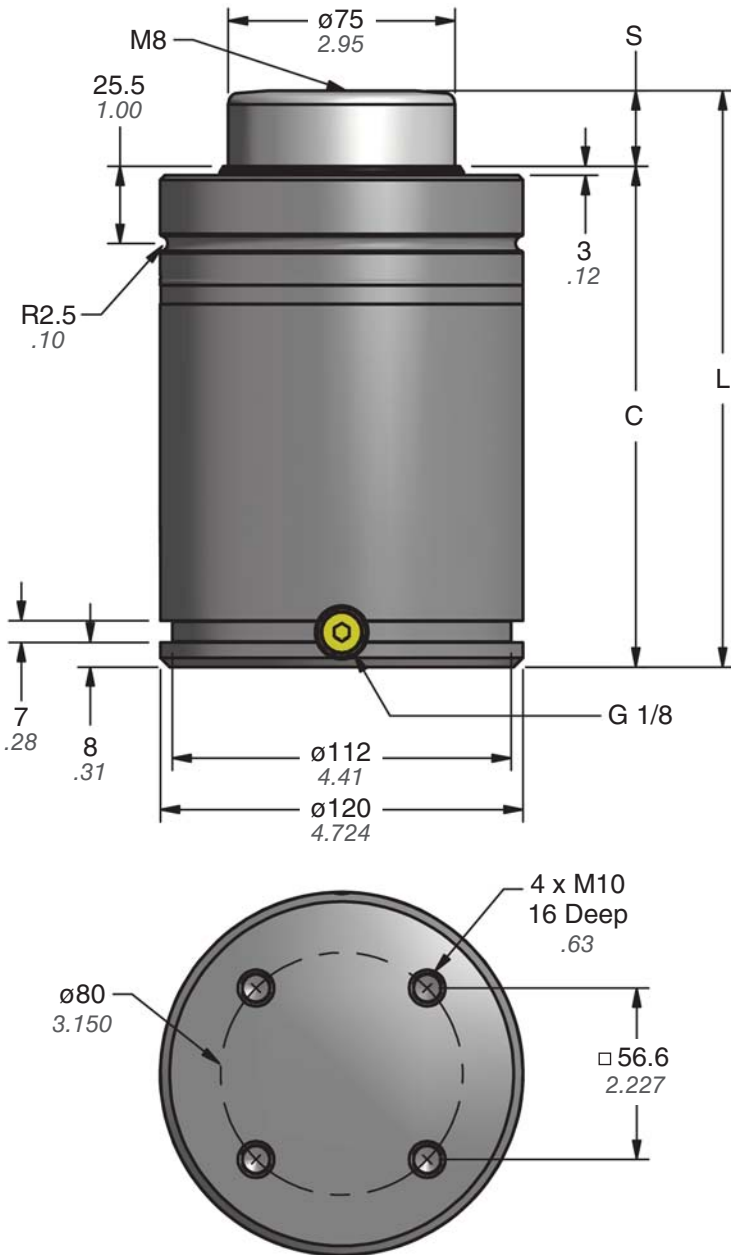
B25 **90.25.03000**

B26 **90.26.03000**

B25 **90.25.03000**

B26 **90.26.03000**

DADCO offers a wide variety of mounts. If the mounts above are not suitable for the application, contact DADCO.



TO – Basic Model

Part No.	S mm inch	C	L ±0.25 ±.010
• UX.6600.025	25 0.98	165 6.50	190 7.480
• UX.6600.038	37.5 1.48	177.5 6.99	215 8.465
• UX.6600.050	50 1.97	190 7.48	240 9.449
UX.6600.063	62.5 2.46	202.5 7.97	265 10.433
UX.6600.075	75 2.95	215 8.46	290 11.417
• UX.6600.080	80 3.15	220 8.66	300 11.811
• UX.6600.100	100 3.94	240 9.45	340 13.386
• UX.6600.125	125 4.92	265 10.43	390 15.354
UX.6600.150	150 5.91	290 11.42	440 17.323
• UX.6600.160	160 6.30	300 11.81	460 18.110
UX.6600.175	175 6.89	315 12.40	490 19.291
UX.6600.200	200 7.87	340 13.39	540 21.260

• Preferred Sizes

Ordering Example:

UX.6600.025. TO. C. 150

Part Number: _____
 Includes Series, Model and Stroke Length.

Mount Option: _____
 TO = Basic Model. *When not specified, default is TO.* Mounts ordered with cylinder will be attached at the factory.

Mount Only Ordering Example: 90.21.05000

Charging Pressure: _____
 15–150 bar (220–2175 psi). *When not specified, default is 150 bar.*

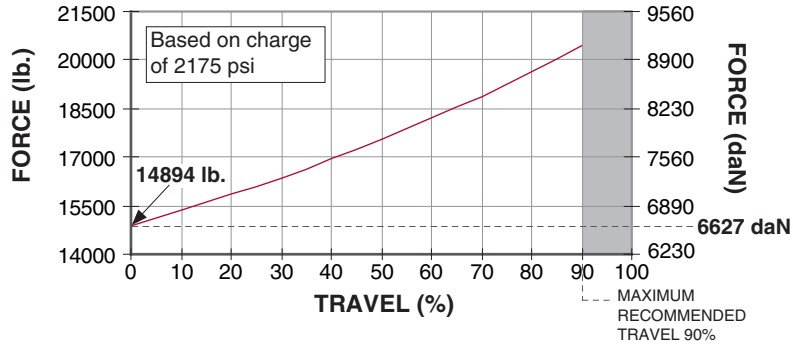
Operating System: _____
 C = Self-contained, F = Open Flow Fitting. *When not specified, default is C, self-contained.*

UX.6600 – 66 kN / 7.4 ton

Force Charts

On-Contact Force

psi	lb.
2175	14894
2000	13695
1750	11983
1500	10272
1000	6848
500	3424
250	1712



On-Contact Force

bar	daN
150	6627
125	5522
100	4418
75	3313
50	2209
25	1104
20	884

Mount Options

TFM **Welded**

TSW **Welded**

B11 **90.11.05000**

MOUNT FROM TOP OR BASE

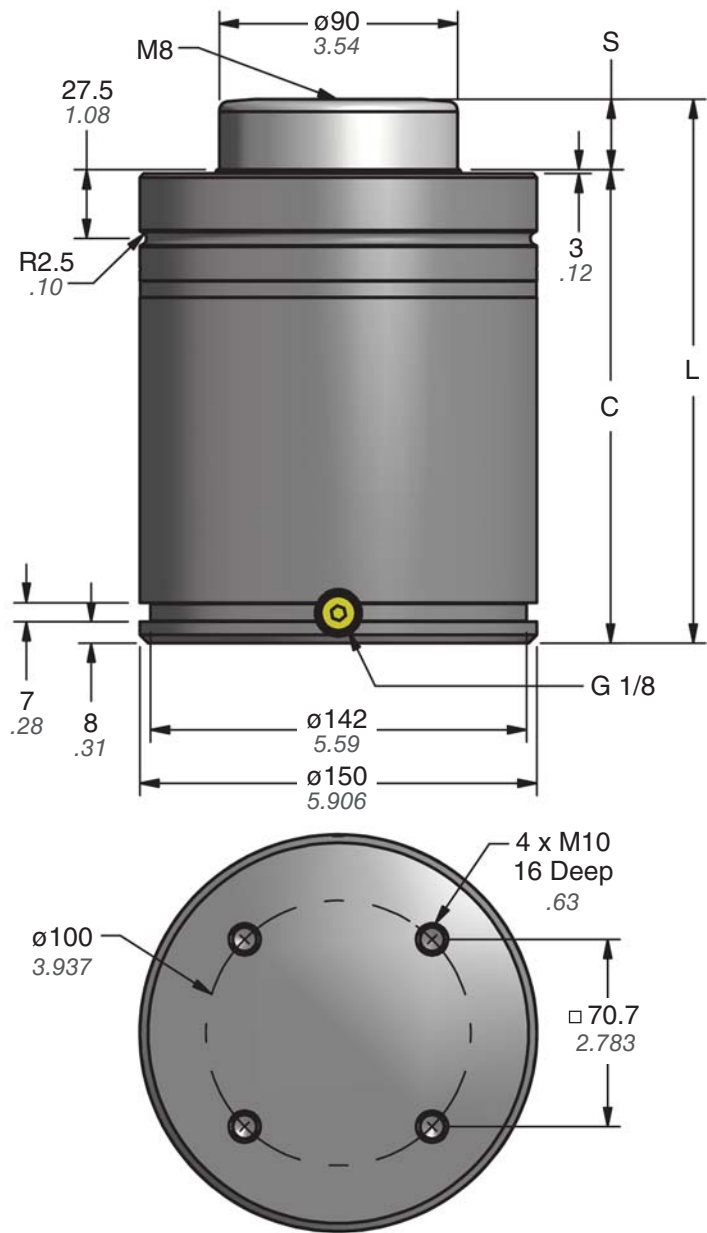
B12 **90.12.05000**

B21 **90.21.05000**

B25 **90.25.05000**

B19 **90.19.05000**

DADCO offers a wide variety of mounts. If the mounts above are not suitable for the application, contact DADCO.



TO – Basic Model

Part No.	S mm inch	C	L ±0.25 ±.010
• UX.9600.025	25 0.98	180 7.09	205 8.071
UX.9600.038	37.5 1.48	192.5 7.58	230 9.055
• UX.9600.050	50 1.97	205 8.07	255 10.039
UX.9600.063	62.5 2.46	217.5 8.56	280 11.024
UX.9600.075	75 2.95	230 9.06	305 12.008
• UX.9600.080	80 3.15	235 9.25	315 12.402
• UX.9600.100	100 3.94	255 10.04	355 13.976
• UX.9600.125	125 4.92	280 11.02	405 15.945
UX.9600.150	150 5.91	305 12.01	455 17.913
• UX.9600.160	160 6.30	315 12.40	475 18.701
UX.9600.175	175 6.89	330 12.99	505 19.882
UX.9600.200	200 7.87	355 13.98	555 21.850

• Preferred Sizes

Ordering Example:

UX.9600.025. TO. C. 150

Part Number: _____
 Includes Series, Model and Stroke Length.

Mount Option: _____
 TO = Basic Model. *When not specified, default is TO.* Mounts ordered with cylinder will be attached at the factory.

Mount Only Ordering Example: 90.21.07500

Charging Pressure: _____
 15–150 bar (220–2175 psi). *When not specified, default is 150 bar.*

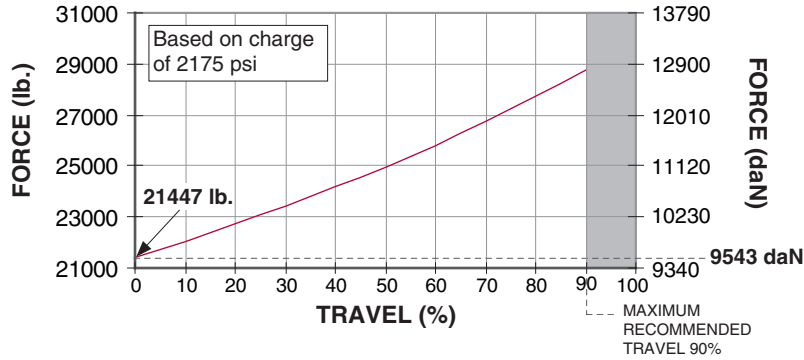
Operating System: _____
 C = Self-contained, F = Open Flow Fitting. *When not specified, default is C, self-contained.*

UX.9600 – 95 kN / 10.7 ton

Force Charts

On-Contact Force

psi	lb.
2175	21447
2000	19721
1750	17256
1500	14791
1000	9861
500	4930
250	2465



On-Contact Force

bar	daN
150	9543
125	7952
100	6362
75	4771
50	3181
25	1590
20	1272

Mount Options

TFM **Welded**

TSW **Welded**

B11 **90.11.07500**

MOUNT FROM TOP ONLY

B12 **90.12.07500**

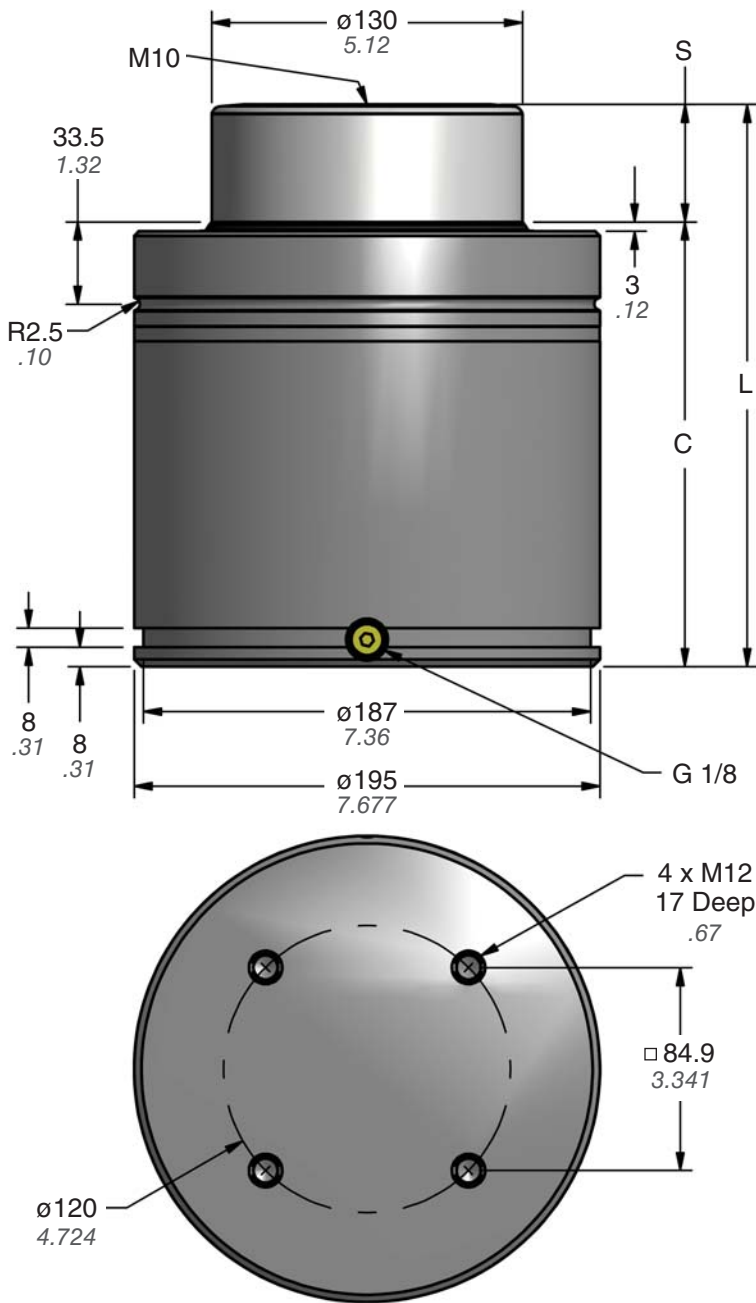
B21 **90.21.07500**

B25 **90.25.07500**

B19 **90.19.07500**

DADCO offers a wide variety of mounts. If the mounts above are not suitable for the application, contact DADCO.

NEW!



TO – Basic Model

Part No.	S mm inch	C	L ±0.25 ±.010
• UX.20000.025	25 0.98	185 7.28	210 8.268
UX.20000.038	37.5 1.48	197.5 7.78	235 9.252
• UX.20000.050	50 1.97	210 8.27	260 10.236
UX.20000.063	62.5 2.46	222.5 8.76	285 11.220
• UX.20000.080	80 3.15	240 9.45	320 12.598
• UX.20000.100	100 3.94	260 10.24	360 14.173
• UX.20000.125	125 4.92	285 11.22	410 16.142
• UX.20000.160	160 6.30	320 12.60	480 18.898
UX.20000.200	200 7.87	360 14.17	560 22.047

• Preferred Sizes

Ordering Example:

UX.20000.025. TO. C. 150

Part Number:

Includes Series, Model and Stroke Length.

Mount Option:

TO = Basic Model. *When not specified, default is TO.* Mounts ordered with cylinder will be attached at the factory.

Mount Only Ordering Example: 90.21.10000

Charging Pressure:

15–150 bar (220–2175 psi). *When not specified, default is 150 bar.*

Operating System:

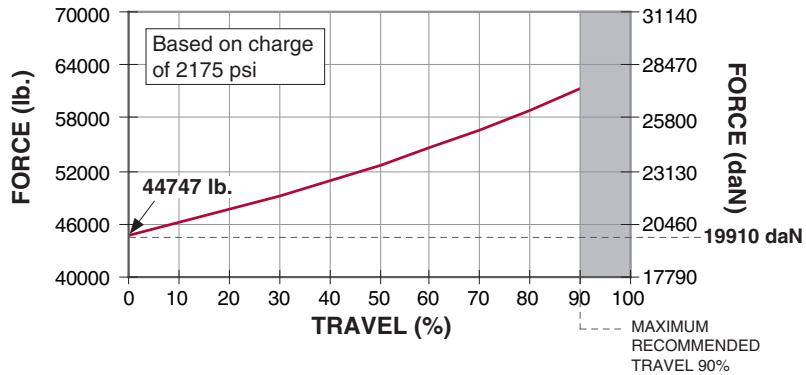
C = Self-contained, F = Open Flow Fitting. *When not specified, default is C, self-contained.*

UX.20000 – 199 kN / 22 ton

Force Charts

On-Contact Force

psi	lb.
2175	44747
2000	41147
1750	36004
1500	30860
1000	20574
500	10287
250	5143



On-Contact Force

bar	daN
150	19910
125	16592
100	13273
75	9955
50	6637
25	3318
20	2655

Mount Options

B11 90.11.10000

B12 90.12.10000

B21 90.21.10000

B25 90.25.10000

B19 90.19.10000

DADCO offers a wide variety of mounts. If the mounts above are not suitable for the application, contact DADCO.

C-Ring Removal Tool
90.356

To remove the C-Style Retaining Ring safely in a single controlled motion. For more information request bulletin 97B110.



Valve Bleed Tool
90.360.4

Use the DADCO Valve Bleed Tool to slowly discharge a spring to the desired pressure. For more information contact DADCO.



C-Ring Installation Tool
90.350.00750 (UX.1000)
90.351.01600 (UX.1600)

To insert the C-Style Retaining Ring into the retaining ring groove.



C-Ring Installation Tool
90.352 (UX.2600 – UX.9600)
90.352.10000 (UX.20000)

To insert the C-Style Retaining Ring into the retaining ring groove.



Removal Sleeve

90.340.00750 (UX.1000) **90.340.03000 (UX.4600)**
90.340.01600 (UX.1600) **90.340.05000 (UX.6600)**
90.340.01500 (UX.2600) **90.340.07500 (UX.9600)**

To position the cartridge below the C-ring groove when assembling or disassembling a gas spring.



Port Servicing Tool
90.320.8

To perform all necessary servicing to the valve compartment.



T-Handle

90.320.2 (M8: UX.1000 – UX.9600)
90.320.10 (M10: UX.20000)

To remove the piston rod when disassembling and position correctly when reassembling.



DADCO Pressure Analyzer
90.315.5

DADCO's Pressure Analyzer includes two interchangeable bits to easily charge, discharge, and gauge the pressure in any DADCO Nitrogen Gas Spring. For more information request bulletin B01133D.



Standard Load Cell

90.300.1000 (UX.1000) **90.300.6600 (UX.6600)**
90.300.01500 (UX.1600) **90.300.9600 (UX.9600)**
90.300.2600 (UX.2600) **90.300.20000 (UX.20000)**
90.300.4600 (UX.4600)

The Standard Load Cell gives precise measurement of gas spring charging pressure. Each model requires its specified load cell. For more information request bulletin 97B119G.



Portable Test Stand
90.305.3

Use the Portable Test Stand in conjunction with a Standard Load Cell for precise measurement of gas spring force. For use with UX.1000 – UX.6600 models only. For more information request bulletin 97B121.



Quick Disconnect Charging Assembly
90.310.040

Use the DADCO Quick Disconnect Charging Assembly, 90.310.040, with the 90.310.111 Charging Nipple or 90.315.5 Pressure Analyzer to charge self-contained gas springs. The 90.310.040 can also be used with a DADCO control panel to charge linked systems. The 90.310.040 includes the 90.310.201 Pressure Regulator, 90.310.252 Hose Assembly and the 90.310.338 Quick Disconnect Filling Assembly.



Quick Disconnect Charging Nipple
90.310.111

Use the DADCO Quick Disconnect Charging Nipple to charge the UX Series gas springs. For more information, contact DADCO.

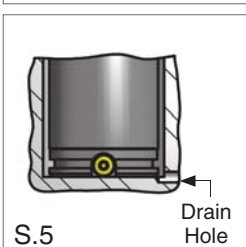
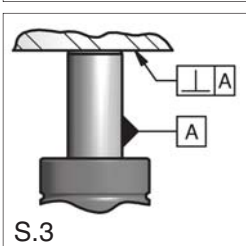
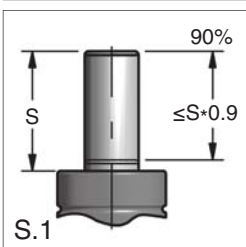
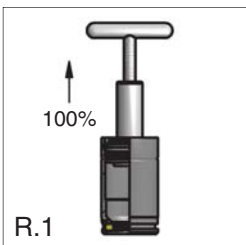
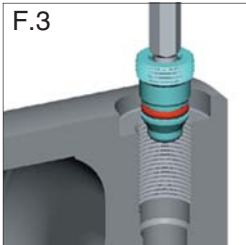
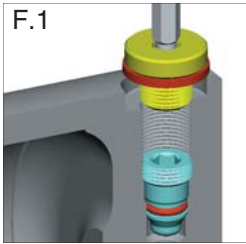


Technical Data

CAUTION
DO NOT attempt maintenance on spring until internal pressure is exhausted.

Operating Specifications	
Charging Medium:	Nitrogen Gas
Charging Pressure Range:	15 – 150 bar (220 – 2175 psi)
Operating Temperature:	-6°C – 71°C (20°F – 160°F)*
Maximum Speed:	.5 m/sec (20 in/sec)

**For extended range applications contact DADCO.*



Self-contained to Linked Operation

- Always wear safety glasses when maintaining gas springs. When exhausting pressure, place the gas spring horizontally with the port up for safety.
- Remove port plug, 90.505.110 (F.1).
- With the cylinder in the horizontal position, depress the valve stem using the appropriate tool (F.2). Cover the port with a cloth to absorb discharge.
- After all of the gas pressure is exhausted, be sure that the piston rod will retract into the tube manually. If not, try depressing the valve again. If still unsuccessful, stop and contact your DADCO Service Representative.
- Remove the valve using the appropriate tool (F.3). Lubricate the threads and o-ring of the port adapter being installed (F.4).
- Install port adapter in open port (F.4). A wide variety of port adapters are available, refer to DADCO's Nitrogen Gas Spring Linked System Catalog.

Recharging Self-contained Gas Spring

- Hold the spring vertically at all times during filling. Never compress the gas spring in a vice or clamp outside of the die or application as damage to the gas spring can result.
- Never fill a gas spring unless the rod is in the fully extended position (R.1). Filling a gas spring with its rod down can result in improper retaining ring seating (R.2). Thread the T-handle 90.320.2 into the rod end and depress the valve stem with the appropriate tool, then pull the rod cartridge assembly up until it is seated firmly against the retaining ring (R.1).
- Charge the gas spring to the desired pressure. Refer to DADCO's U Series Maintenance Instructions B06127 for complete step-by-step instruction.

Provide Stroke Reserve

- DADCO's UX Series Gas Springs will permit travel of the full nominal stroke; however, at least a 10% stroke reserve is recommended to achieve optimal performance and safety (S.1, S.2).
- Overstroking the rod or impacting the top of the gas spring will cause permanent damage.

Avoid Side Loading

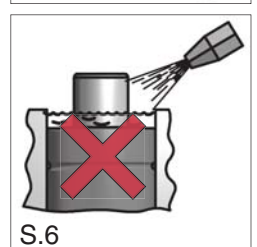
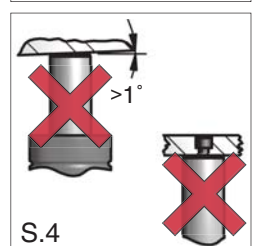
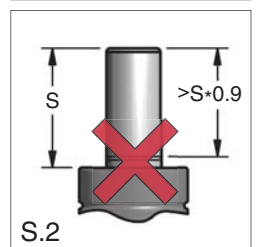
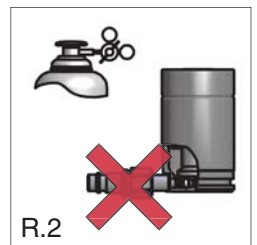
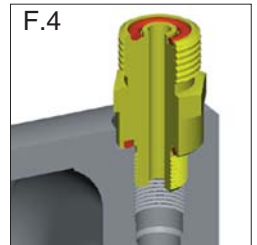
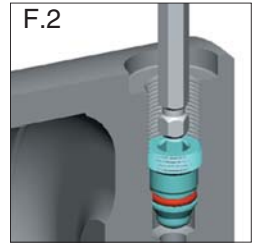
- Side loading resulting from press action or die construction causes increased wear on bearing, seal and piston rod (S.4). Therefore, avoid side loading when possible (S.3).

Rod End Thread

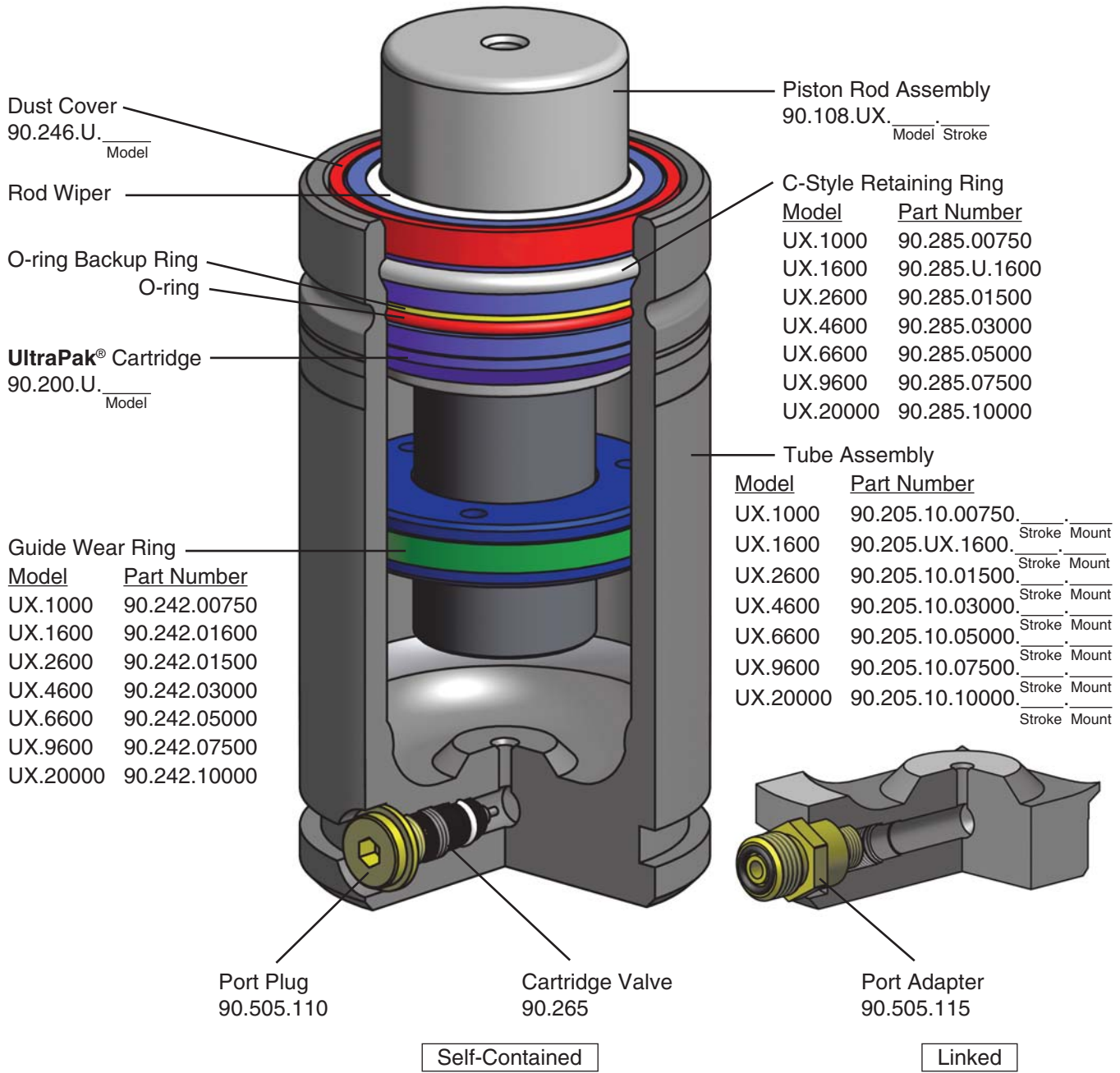
- The end of the piston rod has a construction thread intended for assembly and disassembly only and should never be used to mount or secure the gas spring (S.4). Die vibration and/or misalignment will damage the spring.

Protect From Fluids

- Direct contact with certain die lubricants and cleaners should be avoided (S.6). Protect gas springs by providing adequate drainage in gas spring pockets (S.5).



UX Series Parts List



UX Series Repair Kits

Model	Kit Number	Model	Kit Number
UX.1000	90.108.01000	UX.6600	90.108.06600
UX.1600	90.108.01600	UX.9600	90.108.09600
UX.2600	90.108.02600	UX.20000	90.108.20000
UX.4600	90.108.04600		



The UX Series repair kit includes a fully assembled cartridge, dust cover, bottle of assembly oil and maintenance manual.

Replacement Part Ordering Example:

Models: 1000, 1600, 2600, 4600, 6600, 9600, 20000

Piston Rod Assembly: 90.108. UX. 2600. 025



Note: DADCO's UX Series Nitrogen Gas Springs are permanently marked with model number, serial number and repair kit number. Please refer to these when ordering replacement parts.

DADCO

The global leader in nitrogen gas spring technology

43850 Plymouth Oaks Blvd. • Plymouth, Michigan • 48170 • USA

® 734.207.1100 • 800.DADCO.USA • fax 734.207.2222 • www.dadco.net